

# XLYK

## SURFACE SERIES

A series of surface mounted linear downlight luminaires with a slim width of just 28mm. Sleek as it is pronounced, Xlyk Surface linear downlights are designed with deep optics and reflector for excellent glare control to provide comfortable illumination.



### Fixture Features



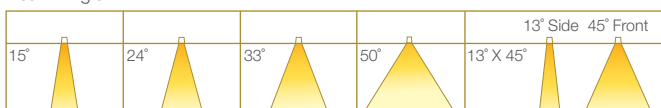
IP54

### Module Colour Temperature Variation



ProART

Beam Angle



### Driver Dimming Variation



(ND)



(PH)



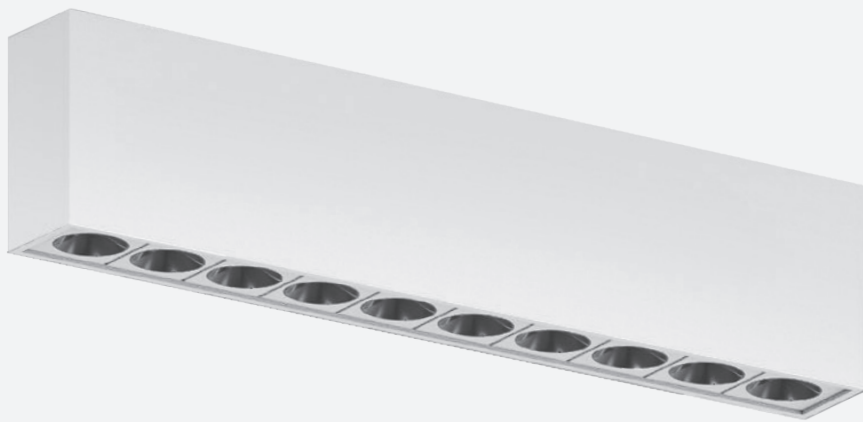
(AN)



(DA)

# XLYK 10 SURFACE

20W SLIM LINEAR SURFACE MOUNTED LUMINAIRE



#SURFACE

## TECHNOLOGY AND FEATURES



Low Flicker,  
No Risk  
(IEEE 1789)

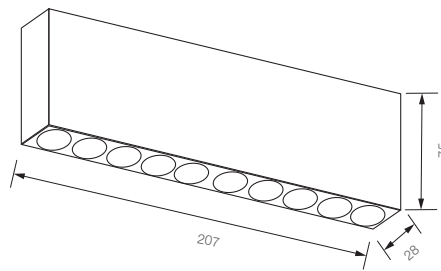
AVAILABLE OPTIONS							
<b>FIXTURE COLOUR OPTIONS</b>	Trim Colour Options	Reflector Colour Options					
		MATT WHITE RAL9003	MATT BLACK RAL9011	CHROME	CHROME BLACK		
	MATT WHITE RAL9003						
	MATT BLACK RAL9011						
<b>LED MODULE</b>	SINGLE CCT						
		2700K	3000K	3500K	4000K	5000K	ProART
<b>DRIVER DIMMING</b>							
		(ND)	(PH)	(AN)	(DA)		

# XLYK 10 SURFACE

## SPECIFICATIONS

Family Type	Xlyk Series
Mains Voltage	220-240V, 50Hz
Typical Operating Voltage	30V
Typical Operating Current	700mA
Lifetime	50,000 hours (80% lumen maintenance at Ta = 25°C), B10
Beam Angles	15°, 24°, 33°, 50°, 13°x45°
Colour Temperatures	2700K, 3000K, 3500K, 4000K, 5000K
CRI	ProART (CRI-95)
SDCM	3 steps MacAdam ellipse binning
Driver (Dimming)	Non-dim, phase (leading & trailing edge), 0-10V, DALI
Mains Connection	Push-pin or screw terminals for convenient connection
Materials	Aluminium, plastic
Fire Safety	Glow wire test 850°C, UL94V-0, VW-1
Flammability Mark	F
Ingress Protection	IP40
Safety Class	Class 2
Standards	IEC 60598-1, IEC 61347-2-13
Regulatory Markings	CE, CCC, RoHS
Weight	0.7kg

## DIMENSIONS (MM)



# XLYK 10 SURFACE

## PHOTOMETRICS

### XLYK 10 SURFACE

Height (m)		E <sub>max</sub> (lx)					XLYK 10			Luminous Flux (lm)
		15°	24°	33°	50°	13° x 45°	LED Power	System Power	CRI	3000K
1	E(0°)	12932	7456	4274	2264	4132	20W	24W	ProART CRI-95	15°, 24°, 33°, 50°, 13° x 45°
	Cone Ø 0° (m)	0.24	0.41	0.58	0.86	0.86				
	Cone Ø 90° (m)	0.30	0.41	0.58	0.95	0.86				
2	E(0°)	3233	1864	1069	566	1033	20W	24W	ProART CRI-95	1531
	Cone Ø 0° (m)	0.48	0.82	1.15	1.71	0.48				
	Cone Ø 90° (m)	0.60	0.83	1.15	1.89	1.71				
3	E(0°)	1437	828	475	252	459	20W	24W	ProART CRI-95	1531
	Cone Ø 0° (m)	0.73	1.23	1.73	2.57	0.72				
	Cone Ø 90° (m)	0.90	1.24	1.73	2.84	2.57				
4	E(0°)	808	466	267	142	258	20W	24W	ProART CRI-95	1531
	Cone Ø 0° (m)	0.97	1.64	2.31	3.43	0.95				
	Cone Ø 90° (m)	1.20	1.66	2.31	3.78	3.43				
5	E(0°)	517	298	171	91	165	20W	24W	ProART CRI-95	1531
	Cone Ø 0° (m)	1.21	2.05	2.89	4.29	1.19				
	Cone Ø 90° (m)	1.49	2.07	2.89	4.73	4.29				

Data are based on maximum output at highest CCT (6000K). 2700K will have a nominal data value of 10% lower than published.  
Nominal CRI-95, equals to Ra>90-97, R9>50

## ORDERING MATRIX CHART

Type	Fixture				LED Module							Driver				
	Angle		Colour		Reflector Colour		LED Power		Beam Angle		Colour Temp		CRI		Dimming	
<b>XLYK-10SM</b>	<b>FX</b>	Fix	<b>WH</b>	Matt White	<b>WH</b>	Matt White	<b>20</b>	<b>20W</b>	<b>15</b>	15°	<b>27</b>	2700K	<b>PA</b>	ProART	<b>ND</b>	Non-Dim
				<b>MB</b>		Matt Black				<b>MB</b>		Matt Black				<b>24</b>
	<b>FX</b>	Fix	<b>WH</b>	Matt White	<b>WH</b>	Matt White	<b>20</b>	<b>20W</b>	<b>24</b>	24°	<b>30</b>	3000K	<b>PA</b>	ProART	<b>AN</b>	0-10V
				<b>MB</b>		Matt Black				<b>MB</b>		Matt Black				<b>33</b>
	<b>FX</b>	Fix	<b>WH</b>	Matt White	<b>WH</b>	Matt White	<b>20</b>	<b>20W</b>	<b>50</b>	50°	<b>40</b>	4000K	<b>PA</b>	ProART	<b>AN</b>	0-10V
				<b>MB</b>		Matt Black				<b>MB</b>		Matt Black				<b>50</b>
<b>FX</b>	Fix	<b>WH</b>	Matt White	<b>WH</b>	Matt White	<b>20</b>	<b>20W</b>	<b>13x45</b>	13°x45°	<b>50</b>	5000K	<b>PA</b>	ProART	<b>AN</b>	0-10V	
			<b>MB</b>		Matt Black				<b>MB</b>		Matt Black				<b>50</b>	5000K

example: XLYK-10SM.FX.WH.CB.20.15.30.PA.ND